

CONTEMPORARY

DRINKING SETS

CONTEMPORARY SETS OF DRINKING CRYSTALWARE PROUDLY BEAR MODERN PENMANSHIP BUT ARE CREATED USING HIGHLY TRADITIONAL MANUAL TECHNIQUES.

Lead-free crystal allows all nuances of the drink's flavour to shine through, while unique Moser colour schemes introduce modern freshness. All that in an insurmountable quality that goes hand in hand with the Moser name since 1857.



PATRIK ILLO

A glass designer that combines respect for the craft with experimenting, serial design and the creation of unique artefacts. He graduated from The Academy of Fine Arts and Design in Bratislava and studied in the UK, France and Italy. He creates designs for leading European domestic glassware producers while also focusing on experimental design and curatorship.

OENO

DESIGN: 2010 / PATRIK ILLO



IN WINE THERE IS TRUTH, IN CRYSTAL THERE IS BEAUTY

The Oeno set was created in collaboration with experienced sommeliers to delight every fan of good wine. The fundamental morphology of the drinking set contains the silhouette of a droplet within, the gracefully flowing curves of which leave a harmonic and soothing impression.

Wine decanter, cat. no. 29690, capacity / width x height: 1250 ml / 8.6 (max. width 23.5) x 24.5 cm / 1.25 qt. / 3.4 (max width 9.2) x 9.6 in. The decanter height is specified without a stopper. Customisable with a coat of arms or initials.





WHITE WINE

350 ml / 5.4 x 21.7 cm
11.83 oz / 2.1 x 8.5 in
29904



WHITE WINE

500 ml / 6 x 24.5 cm
16.9 oz / 2.4 x 9.6 in
29903



WHITE WINE

620 ml / 6.2 x 23.7 cm
20.96 oz / 2.4 x 9.3 in
29902



RED WINE

650 ml / 7.4 x 22.1 cm
21.97 oz / 2.9 x 8.7 in
29901



CHAMPAGNE

200 ml / 4.2 x 24.6 cm
6.76 oz / 1.7 x 9.7 in
29911/f



WATER

1000 ml / 6.8 x 31 cm
1 qt. / 2.2 x 12.2 in
29910/l



WHISKY

360 ml / 6.1 x 9.5 cm
12.17 oz / 2.4 x 3.7 in
29908/O



WATER

400 ml / 5.4 x 14.5 cm
13.52 oz / 2.1 x 5.7 in
29918

Capacity (ml) / width x height (cm). The width measurements refer to the bottom of decanters and jugs and to the top edge of all other shapes. Customisable with a coat of arms or initials.

OPTIC

DESIGN: 2012 / LUKÁŠ JABŮREK

THE MOOD CHANGES BEFORE YOUR EYES

Through the ever-thinning walls of the glasses, the range of Moser colours transitions from radiant contrasts to the mildest shades at the edge of the goblet. Similarly intriguing is the fragile network of light fibres and reflections that forms beneath the surface of each glass.

“The Optic set has many faces. Crystal lends them lightness and elegance,” says the author about his favourite set.



WHISKY
ALEXANDRITE

360 ml / 6.9 x 9.8 cm
12.17 oz / 2.7 x 3.9 in
30148/O



WHISKY
AQUAMARINE

360 ml / 6.9 x 9.8 cm
12.17 oz / 2.7 x 3.9 in
30148/O



WHISKY
ELDOR

360 ml / 6.9 x 9.8 cm
12.17 oz / 2.7 x 3.9 in
30148/O



WHISKY
ROSALIN

360 ml / 6.9 x 9.8 cm
12.17 oz / 2.7 x 3.9 in
30148/O



WHISKY
BERYL

360 ml / 6.9 x 9.8 cm
12.17 oz / 2.7 x 3.9 in
30148/O



WHISKY
TOPAZ

360 ml / 6.9 x 9.8 cm
12.17 oz / 2.7 x 3.9 in
30148/O



ONE COULD BE FORGIVEN FOR THINKING THAT THE OPTIC SET IS MADE UP SOLELY OF A NETWORK OF LIGHT FIBRES AND REFLECTIONS.

Each glass has its own character, but not one of them hides its nature from you. On the contrary, they are all too happy to keep you company. Together, you can board a magical merry-go-round of inspiration and joie de vivre.



SMALL BOWL
13 x 10 cm
5.1 x 3.9 in
30157



SMALL BOWL
10 x 2.5 cm
3.9 x 1 in
30153



WHISKY
360 ml / 6.9 x 9.8 cm
12.17 oz / 2.7 x 3.9 in
30148/O



SPIRITS
80 ml / 4 x 7.5 cm
2.7 oz / 1.6 x 3 in
30158

Capacity (ml) / width x height (cm). The width measurements refer to the bottom of decanters and jugs and to the top edge of all other shapes. The Optic set is available in clear crystal and all basic colours.



WHITE WINE
250 ml / 6.5 x 19.2 cm
8.45 oz / 2.6 x 7.6 in
30143



RED WINE
450 ml / 8.5 x 18 cm
15.21 oz / 3.3 x 7.1 in
30141



CHAMPAGNE
200 ml / 4.5 x 23.5 cm
6.76 oz / 1.8 x 9.3 in
30151/f



WATER
350 ml / 5.4 x 15 cm
11.83 oz / 2.1 x 5.9 in
30158/l



WHITE WINE
350 ml / 7.2 x 20.7 cm
11.83 oz / 2.8 x 8.1 in
30142



WINE
1250 ml / 8.4 x 27.3 cm
1.25 qt. / 3.3 x 10.7 in
30150



MARTINI
290 ml / 13 x 18.5 cm
9.8 oz / 5.1 x 7.3 in
30149



WATER
1500 ml / 12.2 x 22 cm
1.5 qt. / 4.8 x 8.6 in
30159

WELLENSPIEL

DESIGN: 1997 / SABINE WACHS

ENJOY THE MAGICAL PLAY OF WAVES

The delicate optical pattern on these glasses was inspired by the ceaseless movement of the sea. The barely visible waves washing against the surface of the cup will reward you with an enchanting sparkle and dance of lights and shadows that each type of wine sets in motion in its own unique way.



WATER
ALEXANDRITE

290 ml / 6.6 x 22.5 cm
9.8 oz / 2.6 x 8.9 in
29161



WATER
AQUAMARINE

290 ml / 6.6 x 22.5 cm
9.8 oz / 2.6 x 8.9 in
29161



WATER
ELDOR

290 ml / 6.6 x 22.5 cm
9.8 oz / 2.6 x 8.9 in
29161



WATER
ROSALIN

290 ml / 6.6 x 22.5 cm
9.8 oz / 2.6 x 8.9 in
29161



WATER
BERYL

290 ml / 6.6 x 22.5 cm
9.8 oz / 2.6 x 8.9 in
29161



WATER
TOPAZ

290 ml / 6.6 x 22.5 cm
9.8 oz / 2.6 x 8.9 in
29161

Capacity (ml) / width (upper rim) x height (cm). The Wellenspiel set is available in clear crystal and all basic colours.



**RED WINE**

640 ml / 7.7 x 21.1 cm
21.64 oz / 3 x 8.3 in
29161

**RED WINE**

590 ml / 7.9 x 22.5 cm
19.95 oz / 3.1 x 8.9 in
29161

**WHITE WINE**

180 ml / 5.6 x 20.4 cm
6.08 oz / 2.2 x 8 in
29162

**WINE**

160 ml / 6.1 x 18.5 cm
5.41 oz / 2.4 x 7.3 in
29163

**CHAMPAGNE**

170 ml / 4.4 x 23 cm
5.74 oz / 1.7 x 9.1 in
29171/f

**WATER**

290 ml / 6.6 x 22.5 cm
9.8 oz / 2.6 x 8.9 in
29161

**BEER**

330 ml / 6.1 x 17.5 cm
11.15 oz / 2.4 x 6.9 in
29176

**LIQUEUR**

50 ml / 5 x 15.5 cm
1.69 oz / 2 x 6.1 in
29165

Capacity (ml) / width (upper rim) x height (cm). The Wellenspiel set is available in clear crystal and all basic colours.

SABINE WACHS

The "Play of Waves" collection was designed by German designer Sabine Wachs, the author of the dining, tea and coffee sets of the same name, produced by the famous Meissen porcelain manufactory. After studying at the University of Industrial Design in Halle, Sabine became one of the most prominent table set designers, and Wellenspiel is her masterpiece.



BOUQUET

DESIGN: 2020 / MOSER

IN BOUQUET VERITAS

The name of this modern collection references both the sensory properties of wine and the art of floristics. Its unpretentiously attractive yet confident design is a faithful companion to your drink without becoming its competitor.

Whether you are a sommelier or simply a lover of good wine, you are certain to find truth and delight in Bouquet. Bouquet is available in clear crystal or characteristic Moser colours to adorn your vinothèque.





WINE
870 ml / 9.5 x 25.5 cm
29.41 oz / 3.7 x 10 in
30281



WINE
550 ml / 8.1 x 22 cm
18.59 oz / 3.2 x 8.7 in
30281



WINE
620 ml / 7.5 x 26.6 cm
20.96 oz / 3 x 10.5 in
30282



WINE
350 ml / 6.5 x 23 cm
11.83 oz / 2.6 x 9.1 in
30283



CHAMPAGNE
CLEAR CRYSTAL, ROSALIN
250 ml / 6 x 25.5 cm
8.45 oz / 2.4 x 10 in
30291/f



CHAMPAGNE
CLEAR CRYSTAL, ROSALIN
460 ml / 5.8 x 29.6 cm
15.55 oz / 2.3 x 11.7 in
30291/f



BEER
360 ml / 6.5 x 18.5 cm
12.17 oz / 2.6 x 7.3 in
30296



WINE
1500 ml / 5 x 24.8 cm
1.5 qt. / 1.9 x 9.8 in
30290



WINE
CLEAR CRYSTAL, ROSALIN
1500 ml / 7.5 x 30 cm
1.5 qt. / 3 x 11.8 in
30290



WATER
CLEAR CRYSTAL, ROSALIN
1500 ml / 7 x 28 cm
1.5 qt. / 2.8 x 11 in
30299



WATER
BERYL
570 ml / 9 x 11 cm
19.27 oz / 3.5 x 4.3 in
30288



WHISKY
BERYL
300 ml / 7.8 x 9.5 cm
10.14 oz / 3.1 x 3.7 in
30288



SPIRITS
BERYL
130 ml / 5.8 x 7 cm
4.39 oz / 2.3 x 2.8 in
30288



LIQUEUR
CLEAR CRYSTAL, BERYL
60 ml / 4.3 x 12 cm
2.02 oz / 1.7 x 4.7 in
30286

Capacity (ml) / width x height (cm). The width measurements refer to the bottom of decanters and jugs and to the top edge of all other shapes. The Bouquet set is available in clear crystal or clear crystal combined with rosalin or beryl. Tumblers are available in all basic colours. Customisable with a coat of arms or initials.

SONNET

DESIGN: 2020, STUDIO IRDS

A DISCREET BEAUTY

The Sonnet set is among the jewels of contemporary drinking set design. Its character is dictated by the minimalist outlines of smooth walls and energetic cut in perfectly balanced proportions. Your champagne, wine or water will always have a genuine spark.



WATER
ALEXANDRITE

370 ml / 8.2 x 15.1 cm
12.51 oz / 3.2 x 5.9 in
29758/I



WATER
AQUAMARINE

370 ml / 8.2 x 15.1 cm
12.51 oz / 3.2 x 5.9 in
29758/I



WATER
ELDOR

370 ml / 8.2 x 15.1 cm
12.51 oz / 3.2 x 5.9 in
29758/I



WATER
ROSALIN

370 ml / 8.2 x 15.1 cm
12.51 oz / 3.2 x 5.9 in
29758/I



WATER
BERYL

370 ml / 8.2 x 15.1 cm
12.51 oz / 3.2 x 5.9 in
29758/I



WATER
TOPAZ

370 ml / 8.2 x 15.1 cm
12.51 oz / 3.2 x 5.9 in
29758/I

Capacity (ml) / width x height (cm). The Sonnet set is available in clear crystal and all basic colours. Customisable with a coat of arms or initials.



**WINE**

1000 ml / 8 x 33 cm
1 qt. / 3.1 x 13 in
29750/I

**WATER**

1500 ml / 8.5 x 31 cm
1.5 qt. / 3.3 x 12.2 in
29759

**WHITE WINE**

220 ml / 9 x 23.6 cm
7.43 oz / 3.5 x 9.3 in
29742

**RED WINE**

270 ml / 9.8 x 25.6 cm
9.12 oz / 3.9 x 10.1 in
29741

**CHAMPAGNE**

140 ml / 6.3 x 27 cm
4.73 oz / 2.5 x 10.6 in
29751/f

**WATER**

370 ml / 8.2 x 15.1 cm
12.51 oz / 3.2 x 5.9 in
29758/I

**WHISKY**

330 ml / 9.6 x 10.6 cm
11.15 oz / 3.8 x 4.2 in
29748/O

Capacity (ml) / width x height (cm). The decanter height is specified without a stopper. The width measurements refer to the bottom of decanters and jugs and to the top edge of all other shapes. The Sonnet set is available in clear crystal and all basic colours. Customisable with a coat of arms or initials.



JAN MAREŠ

Glass artist and painter born in Česká Lípa. A disciple of Stanislav Libenský and Jiří Hrcuba, he himself taught techniques of glass refining at Centre del Vidre in Barcelona, Pilchuck Glass School and Corning Studio in the US. He collaborated with Moser glassworks from 1992. His works are represented in many exhibition displays and private collections all over the world.

CASANOVA

DESIGN: 2014 / JAN MAREŠ

LET YOURSELF BE SEDUCED TO A TOAST

This collection, named after a Venetian adventurer, writer and famous seducer, does not look back at history. Rather, it looks towards new experiences through its clear crystal optics. Why battle temptation when succumbing can be so intoxicating?





WHITE WINE

220 ml / 9.2 x 21.9 cm
7.43 oz / 3.6 x 8.6 in
29622/PO + Au ring



RED WINE

300 ml / 9.7 x 22.9 cm
10.14 oz / 3.8 x 9 in
29621/PO + Au ring



CHAMPAGNE

240 ml / 6 x 25.2 cm
8.11 oz / 2.4 x 9.9 in
29631/f/PO + Au ring



LIQUEUR

100 ml / 7 x 19.3 cm
3.38 oz / 2.8 x 7.6 in
29624/PO Pt + Pt ring



WATER

360 ml / 9.9 x 24.4 cm
12.17 oz / 3.9 x 9.6 in
29621/PO + Au ring



BEER

300 ml / 8.6 x 21.9 cm
10.14 oz / 3.4 x 8.6 in
29636/PO Pt + Pt ring



WATER

1500 ml / 15.4 x 27.2 cm
1.5 qt. / 6 x 10.7 in
29639/PO Pt + Pt ring



WATER

450 ml / 6.7 x 19.3 cm
15.21 oz / 2.6 x 7.6 in
29638/l/PO Pt + Pt ring



WHISKY

300 ml / 8 x 10.9 cm
10.14 oz / 3.1 x 4.3 in
29628/PO Pt + Pt ring



WINE

1000 ml / 6.7 x 35.9 cm
1 qt. / 2.6 x 14.1 in
29630/l/PO + Au ring



MARTINI

160 ml / 11.9 x 18.5 cm
5.41 oz / 4.7 x 7.3 in
29629/PO + Au ring



SPIRITS

70 ml / 4 x 8.6 cm
2.36 oz / 1.6 x 3.4 in
29638/v/PO Pt + Pt ring

Capacity (ml) / width x height (cm). The decanter height is specified without a stopper. The width measurements refer to the bottom of decanters and jugs and to the top edge of all other shapes. The set is available with a gold or platinum decoration (PO + Au ring - gold decoration, PO Pt + Pt ring - platinum decoration). Customisable with a coat of arms or initials.

CUBISM

DESIGN: 2009 / RONY PLESL



WHISKY
CLEAR CRYSTAL

220 ml / 8 × 10.3 cm
7.43 oz / 3.1 × 4.1 in
29821



WHISKY
AQUAMARINE

220 ml / 8 × 10.3 cm
7.43 oz / 3.1 × 4.1 in
29821



WHISKY
TOPAZ

220 ml / 8 × 10.3 cm
7.43 oz / 3.1 × 4.1 in
29821



WHISKY
ELDOR

220 ml / 8 × 10.3 cm
7.43 oz / 3.1 × 4.1 in
29821



WHISKY
ROSALIN

220 ml / 8 × 10.3 cm
7.43 oz / 3.1 × 4.1 in
29821



WHISKY
ALEXANDRITE

220 ml / 8 × 10.3 cm
7.43 oz / 3.1 × 4.1 in
29821



WHISKY
BERYL

220 ml / 8 × 10.3 cm
7.43 oz / 3.1 × 4.1 in
29821

Capacity (ml) / width (upper rim) × height (cm). The Cubism set is available in clear crystal and all basic colours.

BONBON

DESIGN: 2014 / LUKÁŠ JABŮREK

SWEETEN UP YOUR LIFE

The Bonbon crystal set outright radiates the atmosphere of joy and optimism. The jars can serve as the hideaway for your favourite sweets, dried fruits or any other little something that takes your fancy. Whatever they conceal, just a glance at them will make you look forward to peeking inside.



JAR
CLEAR CRYSTAL, ALEXANDRITE

15 x 12.5 cm
5.9 x 4.9 in
3214/wedge cuts



JAR
CLEAR CRYSTAL, AQUAMARINE

15 x 12.5 cm
5.9 x 4.9 in
3214/wedge cuts



JAR
CLEAR CRYSTAL, ELDOR

15 x 12.5 cm
5.9 x 4.9 in
3214/wedge cuts



JAR
CLEAR CRYSTAL, ROSALIN

15 x 12.5 cm
5.9 x 4.9 in
3214/wedge cuts



JAR
CLEAR CRYSTAL, BERYL

15 x 12.5 cm
5.9 x 4.9 in
3214/wedge cuts



JAR
CLEAR CRYSTAL, TOPAZ

15 x 12.5 cm
5.9 x 4.9 in
3214/wedge cuts



Width x height (cm). Jar height is without a lid. The Bonbon set is available in clear crystal and all basic colours.



WHISKY
CLEAR CRYSTAL

370 ml / 8.8 x 10.1 cm
12.51 oz / 3.5 x 4 in
26638/l/wedge cuts



WHISKY
ELDOR

370 ml / 8.8 x 10.1 cm
12.51 oz / 3.5 x 4 in
26638/l/wedge cuts



WHISKY
TOPAZ

370 ml / 8.8 x 10.1 cm
12.51 oz / 3.5 x 4 in
26638/l/wedge cuts



WHISKY
ROSALIN

370 ml / 8.8 x 10.1 cm
12.51 oz / 3.5 x 4 in
26638/l/wedge cuts



WHISKY
ALEXANDRITE

370 ml / 8.8 x 10.1 cm
12.51 oz / 3.5 x 4 in
26638/l/wedge cuts



WHISKY
AQUAMARINE

370 ml / 8.8 x 10.1 cm
12.51 oz / 3.5 x 4 in
26638/l/wedge cuts



WHISKY
BERYL

370 ml / 8.8 x 10.1 cm
12.51 oz / 3.5 x 4 in
26638/l/wedge cuts



WHISKY
OCEAN GREEN

370 ml / 8.8 x 10.1 cm
12.51 oz / 3.5 x 4 in
26638/l/wedge cuts



VASE
CLEAR CRYSTAL,
ALEXANDRITE

15 x 37 cm
5.9 x 14.6 in
3234/wedge cuts



WHISKY
CLEAR CRYSTAL,
AQUAMARINE

1000 ml / 10.7 x 25.8 cm
1 qt. / 4.2 x 10.2 in
26630/l/wedge cuts



BOWL
CLEAR CRYSTAL, SMOKE

27 x 17 cm
10.6 x 6.7 in
3235/wedge cuts



LAMP SHADE
CLEAR CRYSTAL

15 x 30 cm
5.9 x 11.8 in
3315/wedge cuts



JAR
CLEAR CRYSTAL,
AQUAMARINE

15 x 20.5 cm
5.9 x 8 in
3214/wedge cuts



JAR
CLEAR CRYSTAL,
ALEXANDRITE

15 x 20.5 cm
5.9 x 8 in
3214/wedge cuts

Capacity (ml) / width x height (cm). The jar and decanter height is specified without a lid or a stopper respectively.
The width measurements refer to the bottom of decanters and to the top edge of all other shapes.
The Bonbon set is available in clear crystal and all basic colours.



PETR LARVA

Petr Larva is a designer, glass artist and the Art Director of Moser glassworks. He studied at the Academy of Arts, Architecture and Design in Prague in the glass studio of Vladimír Kopecký. He is the holder of a number of international awards.

Larva perceives glass as a medium that carries meaning, feeling and atmosphere. His works are a part of several museum collections and can even be found in presidential offices in Europe and the US.

SOLARIS

DESIGN: 2021 / PETR LARVA

A GOLD MIRROR AT THE BOTTOM OF EVERY GLASS

Crystal glasses from the Solaris set shine like the sun. Twelve cut sides terminating with a facet amplify the reflections of 24-carat gold covering the underside of the robust bottom. The entire set is interwoven by a confident common thread of straight shapes and a layer of rare metal, which reflects the light and movement of the surrounding world.



**WHISKY**

750 ml / 10 x 26 cm
25.36 oz / 4 x 10.2 in
30350/I

**WATER, LONG DRINK**

385 ml / 7.3 x 16.8 cm
13 oz / 2.9 x 6.6 in
30341

**WHISKY**

310 ml / 8.8 x 10.1 cm
10.48 oz / 3.5 x 4 in
30358/I

**SPIRITS**

100 ml / 5.9 x 9.3 cm
3.38 oz / 2.3 x 3.7 in
30346

Capacity (ml) / width x height (cm). The decanter height is specified without a stopper.
The width measurements refer to the bottom of decanters and to the top edge of all other shapes.

CLASSIC

DRINKING SETS

SUCCUMB WITH US TO THE MAGIC OF TIMELESS SETS THAT HAVE LOST NONE OF THEIR PERFECTION DESPITE THEIR AGE.

Before a Moser glass can become a true gem, it goes through the hands of dozens of craftsmen. Mastery of the art of glassmaking is evidenced both in the detail of each individual cup, decanter or jug and in the generously conceived sets that shine on ceremonial tables, at royal weddings and state receptions alike.

SPLENDID

DESIGN: 1911

MAKE AN IMPRESSION ON YOUR GUESTS

Back in 1911, Leo Moser and his glassmakers created a highly presentable collection of crystalware that shines bright on royal feasts and ceremonial tables at various social occasions to this day. Ownership of the most luxurious Moser set of all time always was and will be a matter of prestige and refined taste.

Owners of the Splendid set include many royal families, statesmen and other prominent figures. It has become a tradition that Moser engravers personalise the set with family coats of arms or initials.



COGNAC

1000 ml / 4.9 x 17.1 cm
1 qt. / 2 x 6.7 in
16530/1/10160/OP



WATER

1500 ml / 14.8 x 26.2 cm
1.5 qt. / 5.8 x 10.3 in
10179/OP



BRANDY & COGNAC

750 ml / 10.8 x 17 cm
25.36 oz / 4.3 x 6.7 in
2496/10160/OP



Capacity (ml) / width x height (cm). The decanter height is specified without a stopper. The width measurements refer to the bottom of decanters and jugs. Customisable with a coat of arms or initials (a special type of the Splendid set with a decoration designed to bear initials). The Splendid set is available in clear crystal with a gold (OP) or platinum decoration (OP pt).



WHITE WINE
200 ml / 8.6 x 19.8 cm
6.76 oz / 3.4 x 7.8 in
10162/OP



RED WINE
260 ml / 9.7 x 22 cm
8.79 oz / 3.8 x 8.7 in
10161/OP



CHAMPAGNE
185 ml / 7.3 x 23.6 cm
6.25 oz / 2.9 x 9.3 in
10171/f/OP



WATER
180 ml / 7.7 x 13.5 cm
6.08 oz / 3 x 5.3 in
10178/l/OP



LIQUEUR
45 ml / 5.5 x 12.4 cm
1.52 oz / 2.2 x 4.9 in
10165/OP



BRANDY & COGNAC
320 ml / 6.3 x 12.3 cm
10.82 oz / 2.5 x 4.8 in
4669/ll/10160/OP



WHISKY
370 ml / 10.2 x 10.6 cm
12.51 oz / 4 x 4.2 in
10168/O/OP



SPIRITS
40 ml / 4.8 x 6.8 cm
1.35 oz / 1.9 x 2.7 in
10178/V/OP



WINE
1000 ml / 13.5 x 29.8 cm
1 qt. / 5.4 x 11.7 in
10170/l/OP



CHAMPAGNE ICE BUCKET
21.8 x 27 cm
8.6 x 10.6 in
10160/EC/OP



CUP
140 ml / 7.7 x 10.4 cm
4.73 oz / 3 x 4.1 in
10160/K/OP



MUG
500 ml / 8.2 x 14.8 cm
17 oz / 3.2 x 5.8 in
2416/10160/OP



ICE CREAM
340 ml / 12.4 x 8.9 cm
11.49 oz / 4.9 x 3.5 in
10177/OP



SMALL BOWL
12.1 x 6.3 cm
4.8 x 2.5 in
10172/OP



SALT CELLAR
7.5 x 6 cm
3 x 2.4 in
10160/SL/OP



PEPPERPOT
6 x 3.4 cm
2.4 x 1.3 in
10160/R/OP

Capacity (ml) / width x height (cm). The decanter height is specified without a stopper. The width measurements refer to the bottom of decanters and jugs and to the top edge of all other shapes. Customisable with a coat of arms or initials (a special type of the Splendid set with a decoration designed to bear initials). The Splendid set is available in clear crystal with a gold (OP) or platinum decoration (OP pt).



CENTREPIECE
24.5 x 17.5 cm
9.6 x 6.9 in
10174/N/OP



BOWL
23 x 13.3 cm
9.1 x 5.2 in
910/10160/OP



OVAL BOWL
35.8 x 20.8 cm
14.1 x 8.2 in
910/10160/OP



BOWL
41.8 x 25.3 cm
16.5 x 10 in
801/10160/OP



IKEBANA
8.5 x 27.6 cm
3.3 x 10.9 in
2346/1/10160/OP



VASE
10.4 x 33.1 cm
4.1 x 13 in
5006/10160/OP



VASE
17.5 x 27.8 cm
6.9 x 10.9 in
626/10160/OP



VASE
17 x 30 cm
6.7 x 11.8 in
579/10160/OP



DECORATION
6.6 x 14.4 cm
2.6 x 5.6 in
10160/OZ/OP



SUGAR BOWL
11.4 x 7 cm
4.5 x 2.8 in
10160/Z/OP



CANDLESTICK
5 x 22.8 cm
3.1 x 8.9 in
1019/10160/OP



JAR
8.9 x 5.6 cm
3.5 x 2.2 in
10160/D/OP



BUSINESS CARD STAND
depth 3.5 x width 10.1 x height 8 cm
depth 1.4 x width 4 x height 3.1 in
10160/ST/OP



CHOPSTICK HOLDER
1.6 x 7 cm
0.6 x 2.8 in
10160/CH/OP



NAPKIN HOLDER
depth 5.5 x width 17.9 x height 14 cm
depth 2.6 x width 7 x height 5.5 in
10160/ST/OP



NAPKIN RING
4.3 x 4.5 cm
1.7 x 1.8 in
10160/U/OP



ASHTRAY
16 x 6 cm
6.3 x 2.4 in
560/D/10160/OP



TOOTHPICK HOLDER
4.3 x 8 cm
1.7 x 3.1 in
10160/PA/OP

Width x height (cm). Jar and sugar bowl height are without a lid. The width measurements refer to the bottom of ikebana and decoration and to the top edge of all other shapes. Customisable with a coat of arms or initials (a special type of the Splendid set with a decoration designed to bear initials). The Splendid set is available in clear crystal with a gold (OP) or platinum decoration (OP pt).

ROYAL

DESIGN: 1907

LESS IS MORE

The wholly timeless nature of this collection is a testament to the prescience of the Moser family. The Royal drinking set was created back in 1907. With its austere look, its design matches the New Empire aesthetic that was gaining popularity at the start of the century at the expense of Art Nouveau ornateness.

The perfection of classical shapes and subtle decoration by a precise cut and minimum gold lends a confident and solid character to the set.



WINE

1000 ml / 10.4 x 25.3 cm
33.81 oz / 4.2 x 10 in
9010/I/PO



WATER

1500 ml / 8.8 x 26.2 cm
15.72 oz / 3.5 x 10.3 in
9019/PO



TEA

120 ml / 6.4 x 9.4 cm
4.06 oz / 2.5 x 3.7 in
9000/9013/PO

Capacity (ml) / width x height (cm). The decanter height is specified without a stopper. The width measurements refer to the bottom of decanters and jugs and to the top edge of all other shapes. The Royal set is available in clear crystal with a gold (PO) or platinum rim (PO pt). Customisable with a coat of arms or initials.





WHITE WINE

280 ml / 8.6 x 16.3 cm
9.46 oz / 3.4 x 6.4 in
9001/PO



RED WINE

360 ml / 9.2 x 17.3 cm
12.17 oz / 3.6 x 6.8 in
9001/PO



CHAMPAGNE

180 ml / 5.8 x 21 cm
6.08 oz / 2.3 x 8.3 in
9011/f/PO



BRANDY & COGNAC

320 ml / 6.5 x 12 cm
10.82 oz / 2.6 x 4.7 in
4669/l/9000/PO



WATER

300 ml / 8 x 13.4 cm
10.14 oz / 3.1 x 5.3 in
9018/l/PO



WHISKY

370 ml / 8.6 x 9.7 cm
12.51 oz / 3.4 x 3.8 in
9008/O/PO



SPIRITS

70 ml / 4.6 x 7.8 cm
2.36 oz / 1.8 x 3.1 in
9018/lV/PO



LIQUEUR

40 ml / 4.6 x 9.8 cm
1.35 oz / 1.8 x 3.9 in
9005/PO

Capacity (ml) / width (upper rim) x height (cm). The Royal set is available in clear crystal with a gold (PO) or platinum rim (PO pt). Customisable with a coat of arms or initials.



LADY HAMILTON

DESIGN: 1934

FATEFUL ATTRACTION

Six wide arched facets decorate the walls of the glass as it gradually thins towards the rim. This so-called "papal cut" requires maintaining precise proportions, depth and width of the surfaces, making it a task only for true masters. The noble and elegant shape of the goblets is accompanied by a gold or platinum decoration lining the rim of the glass.



CHAMPAGNE
CLEAR CRYSTAL

140 ml / 6.5 x 19.7 cm
4.73 oz / 2.6 x 6.8 in
15011/xx/f



CHAMPAGNE
CLEAR CRYSTAL
OVERLAID WITH
RESEDA

140 ml / 6.5 x 19.7 cm
4.73 oz / 2.6 x 6.8 in
15011/xx/f



CHAMPAGNE
CLEAR CRYSTAL
OVERLAID WITH
GREEN

140 ml / 6.5 x 19.7 cm
4.73 oz / 2.6 x 6.8 in
15011/xx/f



CHAMPAGNE
CLEAR CRYSTAL
OVERLAID WITH
BLUE

140 ml / 6.5 x 19.7 cm
4.73 oz / 2.6 x 6.8 in
15011/xx/f



CHAMPAGNE
CLEAR CRYSTAL
OVERLAID WITH
ROSE

140 ml / 6.5 x 19.7 cm
4.73 oz / 2.6 x 6.8 in
15011/xx/f



CHAMPAGNE
CLEAR CRYSTAL
OVERLAID WITH
AMETHYST

140 ml / 6.5 x 19.7 cm
4.73 oz / 2.6 x 6.8 in
15011/xx/f



CHAMPAGNE
CLEAR CRYSTAL
OVERLAID WITH
AURORA

140 ml / 6.5 x 19.7 cm
4.73 oz / 2.6 x 6.8 in
15011/xx/f

Capacity (ml) / width x height (cm). The Lady Hamilton set is available in clear crystal and all basic and overlaid colours, with a gold or platinum decoration. Customisable with a coat of arms or initials.



WHITE WINE
210 ml / 9.6 x 17.6 cm
7.10 oz / 3.8 x 6.9 in
15001



RED WINE
310 ml / 11 x 19.1 cm
10.5 oz / 4.4 x 7.6 in
15001



LIQUEUR
40 ml / 6 x 10.4 cm
1.35 oz / 2.4 x 4.1 in
15005



WATER
360 ml / 8.9 x 13.9 cm
12.17 oz / 3.5 x 5.5 in
15018/I



SPIRITS
45 ml / 4.8 x 7.5 cm
1.52 oz / 1.9 x 3 in
15018/VI



WHISKY
370 ml / 9.8 x 10.7 cm
12.51 oz / 3.9 x 4.2 in
15008/O



BRANDY & COGNAC
320 ml / 6.5 x 12 cm
10.82 oz / 2.6 x 4.7 in
4669/II/15000



ICE CREAM
380 ml / 12.3 x 10.8 cm
12.84 oz / 4.8 x 4.3 in
15017



WINE
920 ml / 9.5 x 28.2 cm
31.11 oz / 3.8 x 11.1 in
15010/I



WATER
1500 ml / 9.3 x 20.2 cm
1.5 qt. / 3.6 x 7.9 in
15019



CENTREPIECE
24.5 x 18.4 cm
9.6 x 7.2 in
15014/N/OP



VASE
14 x 35.5 cm
5.5 x 13.9 in
15000/V/OP



OVAL BOWL
34.6 x 21.5 cm
12.6 x 8.5 in
15015/O/M/OP



OVAL BOWL
34.6 x 21.5 cm
12.6 x 8.5 in
15015/O/M/OP pt.



SMALL BOWL
12.8 x 6 cm
5 x 2.4 in
15012



ASHTRAY
16 x 6 cm
6.3 x 2.4 in
560/E/OP

Capacity (ml) / width x height (cm). The decanter height is specified without a stopper. The width measurements refer to the bottom of decanters and jugs and to the top edge of all other shapes. The Lady Hamilton set is available in clear crystal and all basic and overlaid colours (except for the decanter and the jug), with a gold (OP) or platinum decoration (OP pt). Customisable with a coat of arms or initials.

PAULA

DESIGN: 1902

AN EXPERIENCE FOR ALL THE SENSES

You would be hard-pressed to find a chalice that stimulates the senses in so many ways as the glasses from the Paula collection. This engraved and gilded drinking set, first introduced back in 1902 and later named after Leo Moser's wife, is one of the most treasured jewels to have ever been created by Moser glassblowers, cutters, engravers and painters.

The design originates from a time when floral motifs influenced by French and Belgian Art Nouveau were gaining popularity. Further inspiration for the creators also came from the world fairs in Brussels (1897) and Paris (1900).



WINE

1000 ml / 12.8 x 42.5 cm
1 qt. / 5.1 x 16.7 in
7010/I/PO



WATER

1500 ml / 12.3 x 24.2 cm
1.5 qt. / 4.8 x 9.5 in
7019/PO



BRANDY & COGNAC

1000 ml / 13.2 x 18.8 cm
1 qt. / 5.3 x 7.4 in
2496/7000/PO

Capacity (ml) / width x height (cm). The decanter height is specified without a stopper. The width measurements refer to the bottom of decanters and jugs and to the top edge of all other shapes. The Paula set is available in clear crystal and all basic and underlaid colours, with a gold rim (PO).





WHITE WINE

180 ml / 8.7 x 23.7 cm
6.08 oz / 3.4 x 9.3 in
7002/PO



RED WINE

270 ml / 10 x 26 cm
9.12 oz / 3.9 x 10.2 in
7001/PO



CHAMPAGNE

140 ml / 6.5 x 27.2 cm
4.73 oz / 2.6 x 10.7 in
7011/f/PO



LIQUEUR

50 ml / 5.8 x 16 cm
1.69 oz / 2.3 x 6.3 in
7005/PO



WATER

370 ml / 7.9 x 13.3 cm
12.51 oz / 3.1 x 5.2 in
7018/II/PO



BRANDY & COGNAC

320 ml / 6.5 x 12 cm
10.82 oz / 2.6 x 4.7 in
04669/II/7000/PO



WHISKY

370 ml / 9.7 x 10.1 cm
12.51 oz / 3.8 x 4 in
7008/O/PO



SPIRITS

70 ml / 4.7 x 8 cm
2.36 oz / 1.9 x 3.1 in
7018/IV/PO



VASE

17.5 x 27.8 cm
6.9 x 10.9 in
626/7000/PO



BOWL

30 x 21.5 cm
11.8 x 8.5 in
540/7000/PO



CANDLESTICK

4.3 x 25.6 cm
1.7 x 10.1 in
7000/S/PO



DECORATION

6.3 x 15.9 cm
2.5 x 6.2 in
7000/OZ/PO



ASHTRAY

16 x 6 cm
6.3 x 2.4 in
560/E/7000/PO

Capacity (ml) / width (upper rim, except decoration) x height (cm). The Paula set is available in clear crystal and all basic and underlaid colours, with a gold rim (PO).

MAHARANI

DESIGN: 1895

GOLD AND PEARLS IN EVERY GLASS

The Maharani set is characterised by the elegant shape of the chalice, which smoothly transitions into a stem cut to six facets. The lace-fine engraving of flower motifs is accompanied by hand-painted gold lines and a pearl cut.

The look of the current Maharani set is based on an original model created by the Meyr's Neffe glassworks located in Adolfov, Czech Republic. When the operation of the glassworks was taken over by Moser in the 1930s, the set quickly gained popularity and continues to entrance customers all over the world to this day.



WINE

1000 ml / 11 x 25.4 cm
1 qt. / 4.4 x 10 in
4410/I/PO



WATER

1500 ml / 10.9 x 30.2 cm
1.5 qt. / 4.3 x 11.9 in
4419/PO

Capacity (ml) / width x height (cm). The decanter height is specified without a stopper. The width measurements refer to the bottom of decanters and jugs. The Maharani set is available in clear crystal, with a gold rim (PO).





WHITE WINE
220 ml / 9.8 x 20.1 cm
7.43 oz / 3.9 x 7.9 in
4401/PO



RED WINE
330 ml / 10.7 x 21.5 cm
11.15 oz / 4.2 x 8.5 in
4401/xx/PO



CHAMPAGNE
160 ml / 7.5 x 21.8 cm
5.41 oz / 3 x 8.6 in
4411/xx/f/PO



WATER
400 ml / 8.7 x 14.2 cm
13.52 oz / 3.4 x 5.6 in
4418/l/PO



LIQUEUR
50 ml / 6.4 x 13.8 cm
1.69 oz / 2.5 x 5.4 in
4405/PO



BRANDY & COGNAC
320 ml / 6.5 x 12 cm
10.82 oz / 2.6 x 4.7 in
4669/II/4400/PO



WHISKY
370 ml / 10.2 x 10.6 cm
12.51 oz / 3.8 x 4 in
4408/O/PO



SPIRITS
60 ml / 4.6 x 8.6 cm
2.02 oz / 1.8 x 3.4 in
4418/IV/PO



CENTREPIECE
27.8 x 14.8 cm
10.9 x 5.8 in
4400/N/PO



CENTREPIECE
35 x 18.9 cm
13.8 x 7.4 in
4400/N/PO



SMALL BOWL
12.4 x 6.1 cm
4.9 x 2.4 in
4412/PO



ICE CREAM
320 ml / 12.5 x 9.1 cm
10.82 oz / 4.9 x 3.6 in
4417/PO



CANDLESTICK
3.7 x 26 cm
1.5 x 10.2 in
4400/S/PO



DECORATION
7.6 x 15.3 cm
3 x 6 in
4400/OZ/PO

Capacity (ml) / width (upper rim, except decoration) x height (cm). The Maharani set is available in clear crystal, with a gold rim (PO).

COPENHAGEN

DESIGN: 1909

AN INVITATION TO THE WORLD OF LUXURY CRYSTAL

Among the most luxurious Moser collections, there is one that has been an inseparable part of major events and meetings at the Prague Castle since the days of the first Czechoslovak president, T. G. Masaryk. Its highly presentable looks have made this line of masterful Czech crystal popular among many heads of state all over the world.



WINE

1000 ml / 11 x 31.6 cm
1 qt. / 4.3 x 12.4 in
9910/I/OP



WATER

1500 ml / 12.5 x 30 cm
1.5 qt. / 4.9 x 11.8 in
9919/OP

Capacity (ml) / width x height (cm). The decanter height is specified without a stopper. The width measurements refer to the bottom of decanters and jugs. The Copenhagen set is available in clear crystal with a gold (OP) or platinum decoration (OP pt.). Customisable with a coat of arms or initials.



**WHITE WINE**

260 ml / 8.2 x 18 cm
8.79 oz / 3.2 x 7.1 in
9901/OP

**RED WINE**

340 ml / 8.9 x 19.8 cm
11.49 oz / 3.5 x 7.8 in
9901/OP

**CHAMPAGNE**

170 ml / 6.3 x 21 cm
5.74 oz / 2.5 x 8.3 in
9911/xx/f/OP

**WATER**

300 ml / 6.5 x 13 cm
10.14 oz / 2.6 x 5.1 in
9918/l/OP

**WHISKY**

370 ml / 8.1 x 10 cm
12.51 oz / 3.2 x 3.9 in
9908/OP

**BRANDY & COGNAC**

320 ml / 6.3 x 12.2 cm
10.82 oz / 2.5 x 4.8 in
4669/ll/9900/OP

**LIQUEUR**

40 ml / 4.6 x 10.1 cm
1.35 oz / 1.8 x 4 in
9905/OP

**SPIRITS**

50 ml / 3.9 x 6.6 cm
1.69 oz / 1.5 x 2.6 in
9918/vl/OP

Capacity (ml) / width (upper rim) x height (cm). The Copenhagen set is available in clear crystal with a gold (OP) or platinum decoration (OP pt.). Customisable with a coat of arms or initials.

POPE

DESIGN: 1916

MAJESTY AND HUMILITY

The iconic Moser collection that set the trend for drinking crystalware for the next century. A major contributor to such success was the exceptional harmony between the set's nigh-on unearthly beauty and everyday practicality, valued not only by the Pope himself but also by other prominent personalities of the ecclesiastical and diplomatic circles.



WINE

1000 ml / 9.9 x 27.8 cm
1 qt. / 4 x 10.9 in
11530/I



WATER

1000 ml / 12.5 x 23.7 cm
1 qt. / 4.9 x 9.3 in
11539

Capacity (ml) / width x height (cm). The decanter height is specified without a stopper. The width measurements refer to the bottom of decanters and jugs. The Pope set is available in clear crystal or with a gold or platinum decoration. Customisable with a coat of arms or initials.





WHITE WINE

170 ml / 8.7 x 18.9 cm
5.74 oz / 3.4 x 7.4 in
11521



RED WINE

280 ml / 9.6 x 20.7 cm
9.46 oz / 3.8 x 8.1 in
11521/xx



CHAMPAGNE

150 ml / 7.3 x 20.6 cm
5.07 oz / 2.9 x 8.1 in
11531/xx/f



WATER

320 ml / 8.9 x 12.8 cm
10.82 oz / 3.5 x 5 in
11538/l



LIQUEUR

35 ml / 5.6 x 12.1 cm
1.18 oz / 2.2 x 4.8 in
11524



BRANDY & COGNAC

320 ml / 6.3 x 12.2 cm
10.82 oz / 2.5 x 4.8 in
4669/11/11520



WHISKY

370 ml / 10.2 x 10.5 cm
12.51 oz / 4 x 4.1 in
11528/O



SPIRITS

50 ml / 5.3 x 7.2 cm
1.69 oz / 2.1 x 2.8 in
11538/V

Capacity (ml) / width (upper rim) x height (cm). The Pope set is available in clear crystal or with a gold or platinum decoration. Customisable with a coat of arms or initials.

MOZART

DESIGN: 1936 / OTTO TAUSCHEK

EACH NOTE IN ITS PLACE

This drinking collection from the mid-1930s is apparently inspired by rococo and classicist art. The smooth chalice of the glasses is decorated with a finely cut pearl rim, and the shape of the stem is reminiscent of the decorated legs of pianos and spinets from the era of the famous composer.

The classicist shape and delicate décor combined with a prominent cut look completely natural despite being the result of a highly demanding creation process. The Mozart drinking collection has been an evergreen among popular Moser sets for over 80 years.



WINE

1000 ml / 9,3 x 28,6 cm
1 qt. / 3,7 x 11,3 in
18290/I



WATER

1500 ml / 10,5 x 21,8 cm
1.5 qt. / 4,1 x 8,6 in
18299

OTTO TAUSCHEK

A painter and graphic artist, designer of porcelain and decorative glass, particularly with etched or painted decorations. He started designing for Moser glassworks in 1911 and created the look of the Mozart set in 1936. He also collaborated with the Rosenthal porcelain manufactory.

Capacity (ml) / width x height (cm). The decanter height is specified without a stopper. The width measurements refer to the bottom of decanters and jugs. The Mozart set is available in clear crystal. Customisable with a coat of arms or initials.





WHITE WINE

170 ml / 7.9 x 17.7 cm
5.74 oz / 3.1 x 7 in
18282



RED WINE

250 ml / 8.7 x 19.7 cm
8.45 oz / 3.4 x 7.8 in
18281



CHAMPAGNE

180 ml / 5.9 x 22.5 cm
6.08 oz / 2.3 x 8.9 in
18291/f



BRANDY & COGNAC

320 ml / 6.4 x 12.9 cm
10.82 oz / 2.5 x 5.1 in
4669/11/18280



WATER

400 ml / 8 x 14.2 cm
13.52 oz / 3.1 x 5.6 in
18298/l



WHISKY

370 ml / 9 x 10.4 cm
12.51 oz / 3.5 x 4.1 in
18288/O



SPIRITS

45 ml / 4.1 x 7.1 cm
1.52 oz / 1.6 x 2.8 in
18298/VI



LIQUEUR

50 ml / 5.3 x 11.9 cm
1.69 oz / 2.1 x 4.7 in
18285

Capacity (ml) / width (upper rim) x height (cm). The Mozart set is available in clear crystal. Customisable with a coat of arms or initials.

BAR

DESIGN: 1934 / RUDOLF ESCHLER



WHISKY

750 ml / 9.4 x 20.7 cm
25.36 oz / 3.7 x 8.1 in
16030/I



WATER

1500 ml / 10.4 x 20.2 cm
1.5 qt. / 4.1 x 8 in
16039



WATER

330 ml / 7.8 x 12.5 cm
11.15 oz / 3.1 x 4.9 in
16038/I



SPIRITS

45 ml / 4.8 x 6.2 cm
1.52 oz / 1.9 x 2.4 in
16025

COME HAVE A DRINK

The Bar set has received new additions combining clear crystal and underlaid Moser colours.

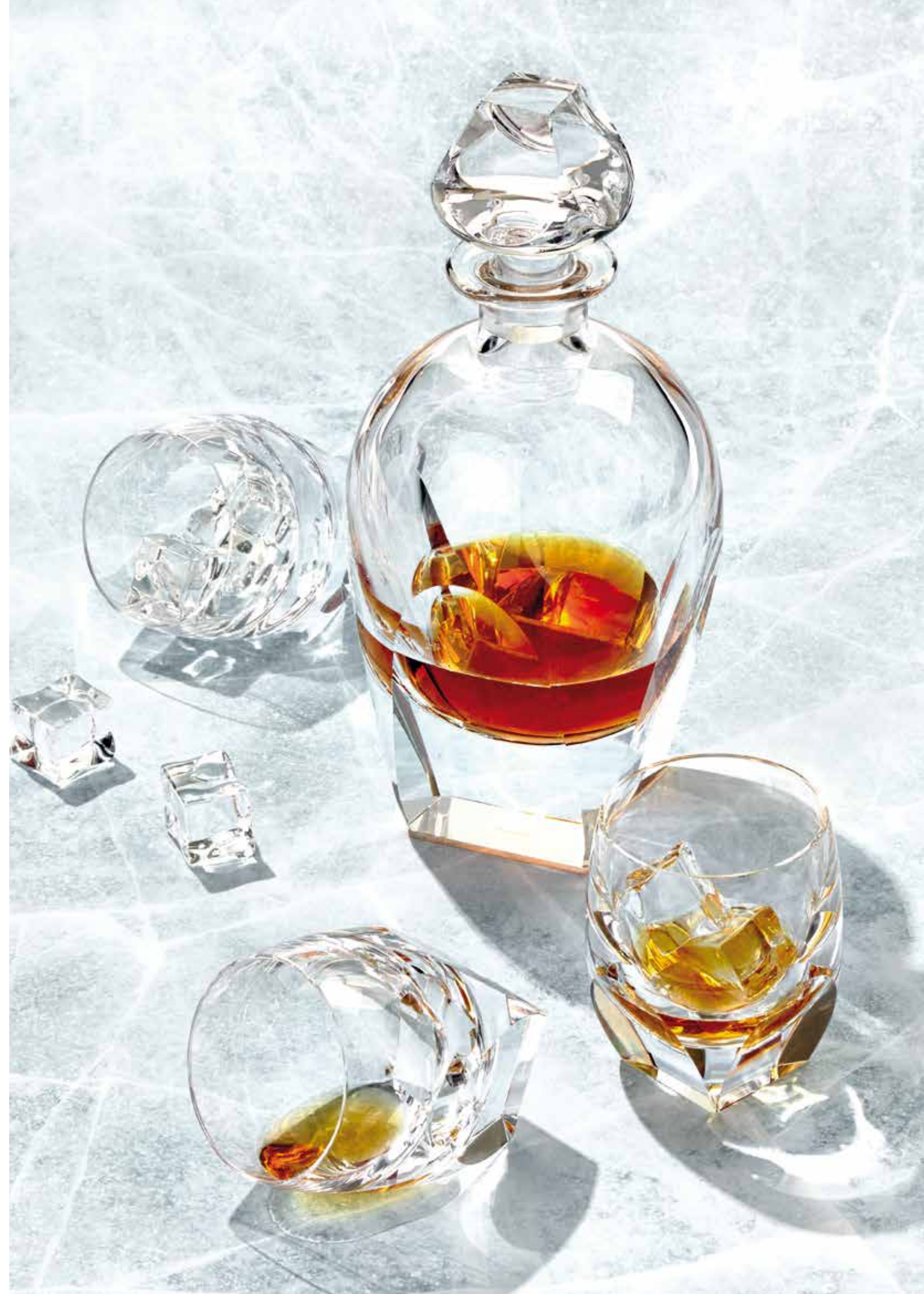
You can also choose from glasses in a uni-colour design, where the robust bottom highlights the hue of the glass in all its depth. Precisely cut arches beautifully reflect light, and the combination of round and square shapes references the austerity of functionalism of the 1930s.

RUDOLF ESCHLER

Designer Rudolf Eschler was one of Moser's most successful designers in the 1930s. His designs constituted a significant portion of Moser expositions at the world fairs in Chicago, Brussels and Paris. Aside from the Bar set, the Moser assortment still includes his Culbuto set to this day.

Collectors and auctioneers also highly value his toiletry and liqueur sets, characterised by strict prismatic shapes.

Capacity (ml) / width x height (cm). The decanter height is specified without a stopper. The width measurements refer to the bottom of decanters and jugs and to the top edge of all other shapes. The set is available in clear crystal, with a gold or platinum decoration. Customisable with a coat of arms or initials.





WHISKY
OCEAN GREEN

170 ml / 7.2 x 9.5 cm
5.74 oz / 2.8 x 3.7 in
16022



WHISKY
SMOKE

170 ml / 7.2 x 9.5 cm
5.74 oz / 2.8 x 3.7 in
16022



WHISKY
ELDOR

170 ml / 7.2 x 9.5 cm
5.74 oz / 2.8 x 3.7 in
16022



WHISKY
TOPAZ

170 ml / 7.2 x 9.5 cm
5.74 oz / 2.8 x 3.7 in
16022



WHISKY
ROSALIN

170 ml / 7.2 x 9.5 cm
5.74 oz / 2.8 x 3.7 in
16022



WHISKY
ALEXANDRITE

170 ml / 7.2 x 9.5 cm
5.74 oz / 2.8 x 3.7 in
16022



WHISKY
AQUAMARINE

170 ml / 7.2 x 9.5 cm
5.74 oz / 2.8 x 3.7 in
16022



WHISKY
BERYL

170 ml / 7.2 x 9.5 cm
5.74 oz / 2.8 x 3.7 in
16022



WHISKY
CLEAR CRYSTAL

170 ml / 7.2 x 9.5 cm
5.74 oz / 2.8 x 3.7 in
16022



WATER
CLEAR CRYSTAL

220 ml / 8 x 10.3 cm
7.43 oz / 3.1 x 4.1 in
16021



WATER
CLEAR CRYSTAL
UNDERLAID WITH AURORA

220 ml / 8 x 10.3 cm
7.43 oz / 3.1 x 4.1 in
16021



WATER
CLEAR CRYSTAL
UNDERLAID WITH ROSE

220 ml / 8 x 10.3 cm
7.43 oz / 3.1 x 4.1 in
16021



WATER
CLEAR CRYSTAL
UNDERLAID WITH AMETHYST

220 ml / 8 x 10.3 cm
7.43 oz / 3.1 x 4.1 in
16021



WATER
CLEAR CRYSTAL
UNDERLAID WITH BLUE

220 ml / 8 x 10.3 cm
7.43 oz / 3.1 x 4.1 in
16021



WATER
CLEAR CRYSTAL
UNDERLAID WITH RESEDA

220 ml / 8 x 10.3 cm
7.43 oz / 3.1 x 4.1 in
16021



WATER
CLEAR CRYSTAL
UNDERLAID WITH GREEN

220 ml / 8 x 10.3 cm
7.43 oz / 3.1 x 4.1 in
16021

Capacity (ml) / width (upper rim) x height (cm). The Bar set is available in clear crystal and all basic and underlaid colours, with a gold or platinum decoration. The bottle and the jug do not allow underlaying for technical reasons, meaning these are only available in clear or all-colour designs. Customisable with a coat of arms or initials.

CULBUTO

DESIGN: 1935 / RUDOLF ESCHLER

A PLAYTHING FOR YOU, A CHALLENGE FOR GLASSMAKERS

The smooth Culbuto drinking collection is the purest expression of functionalism, yet still leaves a light and harmonic impression. The seemingly simple shape of the thin-walled chalice requires a lot of experience and precision during blowing.

The basic clear crystal set will best highlight the colour of your favourite drink, but you can make use of other colour combinations just as well. The guests at your party will thus be able to pick the colour scheme that suits them best.



Decanter 1000 ml / 1 qt., cat. no. 16530/l, width (bottom edge) x height (cm): 5.5 x 17.1 cm / 2.2 x 6.7 in. The decanter height is specified without a stopper. Customisable with a coat of arms or initials.





TUMBLER
ELDOR

340 ml / 9.2 x 9 cm
11.49 oz / 3.6 x 3.5 in
16521



TUMBLER
TOPAZ

340 ml / 9.2 x 9 cm
11.49 oz / 3.6 x 3.5 in
16521



TUMBLER
ROSALIN

340 ml / 9.2 x 9 cm
11.49 oz / 3.6 x 3.5 in
16521



TUMBLER
ALEXANDRITE

340 ml / 9.2 x 9 cm
11.49 oz / 3.6 x 3.5 in
16521



TUMBLER
AQUAMARINE

340 ml / 9.2 x 9 cm
11.49 oz / 3.6 x 3.5 in
16521



TUMBLER
BERYL

340 ml / 9.2 x 9 cm
11.49 oz / 3.6 x 3.5 in
16521



TUMBLER
CLEAR CRYSTAL

330 ml / 7 x 13.1 cm
11.15 oz / 2.8 x 5.2 in
16538/I



SMALL BOWL
CLEAR CRYSTAL

11.7 x 5.7 cm
4.6 x 2.2 in
16532



TUMBLER

250 ml / 6.6 x 11.4 cm
8.45 oz / 2.6 x 4.5 in
16538/II



TUMBLER

150 ml / 5.5 x 9.7 cm
5.07 oz / 2.2 x 3.8 in
16538/III



TUMBLER

340 ml / 9.2 x 9 cm
11.49 oz / 3.6 x 3.5 in
16521



TUMBLER

240 ml / 8.3 x 8 cm
8.11 oz / 3.3 x 3.1 in
16522



TUMBLER

170 ml / 7.4 x 7.2 cm
5.74 oz / 2.9 x 2.8 in
16523



TUMBLER

100 ml / 6.5 x 6.4 cm
3.38 oz / 2.6 x 2.5 in
16524



TUMBLER

65 ml / 5.5 x 5.4 cm
2.19 oz / 2.2 x 2.1 in
16525



TUMBLER

30 ml / 4.7 x 4.5 cm
1.01 oz / 1.9 x 1.8 in
16526

Capacity (ml) / width (upper rim) x height (cm). The Culbuto set is available in clear crystal and all basic colours. Customisable with a coat of arms or initials.

WHISKY SET

DESIGN: 1968 / OLDŘICH LÍPA

DOUBLE THE PLEASURE

Perhaps you prefer your drink with ice, perhaps without. However, this beautiful whisky set is anything but ice cold. The popular set of glasses in minimalist design remains ever modern even though its year of birth (1968) would have allowed it to become the symbol of the Prague Spring.

"I always look for an idea in glass. I try to give it space. And music. I see things in colours even when I work with clear crystal," says the author about his work.



WHISKY
ALEXANDRITE / HUNT ENGR.

1000 ml / 10.7 x 25.8 cm
1 qt. / 4.2 x 10.2 in
26630/I



SPIRITS
ALEXANDRITE / HUNT ENGR.

60 ml / 5.1 x 6.7 cm
2.02 oz / 2 x 2.6 in
26627



WATER
OCEAN GREEN / SEA WORLD
ENGR.

400 ml / 7.3 x 16.8 cm
13.52 oz / 2.9 x 6.6 in
26621



WATER
AQUAMARINE / SEA WORLD
ENGR.

400 ml / 7.3 x 16.8 cm
13.52 oz / 2.9 x 6.6 in
26621



WHISKY
TOPAZ / HORSE
ENGR.

370 ml / 8.8 x 10.1 cm
12.51 oz / 3.5 x 4 in
26638/I

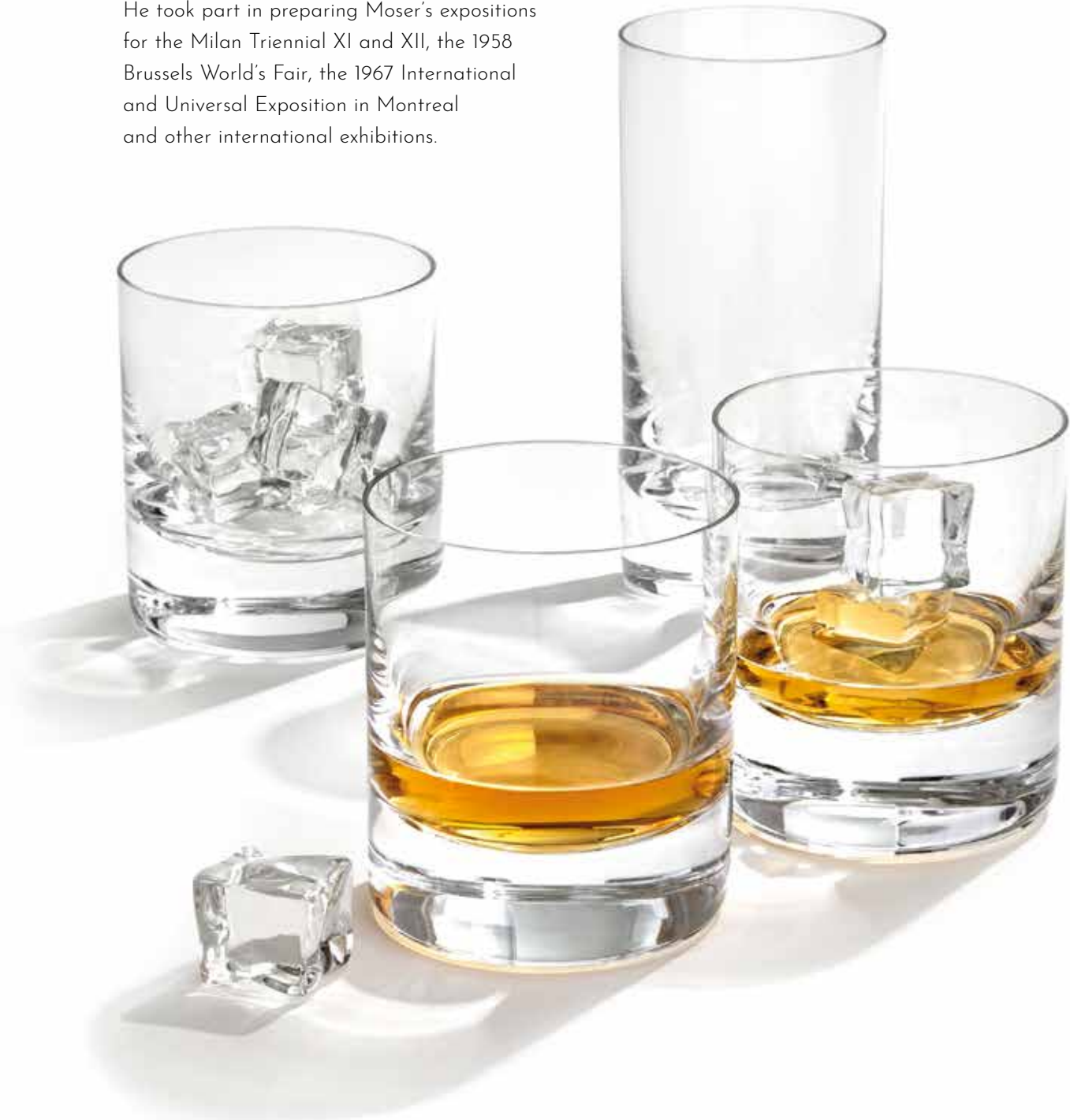
Capacity (ml) / width x height (cm). The decanter height is specified without a stopper. The width measurements refer to the bottom of decanters and to the top edge of all other shapes. Whisky Set is available in clear crystal and all basic colours, with a gold or platinum decoration. Whisky Set is available in a smooth design, with a pebble cut or with various engraved motifs. Customisable with a coat of arms or initials.










Pebble cut Whisky Set.

OLDŘICH LÍPA

A graduate of the glass studio of prof. Kaplický at the Academy of Arts, Architecture and Design in Prague. A versatile glass artist, author of distinctive drinking, decorative and cut engraved crystal.
A principal Moser designer for over 25 years. He took part in preparing Moser's expositions for the Milan Triennial XI and XII, the 1958 Brussels World's Fair, the 1967 International and Universal Exposition in Montreal and other international exhibitions.



	<p>WHISKY</p> <p>1000 ml / 10.7 x 25.8 cm 1 qt. / 4.2 x 10.2 in 26630/I</p>		<p>WATER</p> <p>1500 ml / 12.2 x 29.7 cm 1.5 qt. / 4.8 x 11.7 in 26639</p>
	<p>WATER</p> <p>220 ml / 7 x 11.4 cm 7.3 oz / 2.7 x 4.5 in 26624</p>		<p>WATER</p> <p>400 ml / 7.3 x 16.8 cm 13.52 oz / 2.9 x 6.6 in 26621</p>
	<p>SPIRITS</p> <p>60 ml / 5.1 x 6.7 cm 2.02 oz / 2 x 2.6 in 26627</p>		<p>SPIRITS</p> <p>75 ml / 4 x 10 cm 2.53 oz / 1.6 x 3.9 in 2995</p>
	<p>WHISKY</p> <p>370 ml / 8.8 x 10.1 cm 12.51 oz / 3.5 x 4 in 26638/I</p>		

Capacity (ml) / width x height (cm). The decanter height is specified without a stopper. The width measurements refer to the bottom of decanters and to the top edge of all other shapes. Whisky Set is available in clear crystal and all basic colours, with a gold or platinum decoration. Whisky Set is available in a smooth design, with a pebble cut or with various engraved motifs. Customisable with a coat of arms or initials.



SPIRITS
OCEAN GREEN

60 ml / 5.1 x 6.7 cm
2.02 oz / 2 x 2.6 in
26627



SPIRITS
ALEXANDRITE

60 ml / 5.1 x 6.7 cm
2.02 oz / 2 x 2.6 in
26627



SPIRITS
BERYL

60 ml / 5.1 x 6.7 cm
2.02 oz / 2 x 2.6 in
26627



SPIRITS
TOPAZ

60 ml / 5.1 x 6.7 cm
2.02 oz / 2 x 2.6 in
26627



SPIRITS
ELDOR

60 ml / 5.1 x 6.7 cm
2.02 oz / 2 x 2.6 in
26627



SPIRITS
ROSALIN

60 ml / 5.1 x 6.7 cm
2.02 oz / 2 x 2.6 in
26627



SPIRITS
AQUAMARINE

60 ml / 5.1 x 6.7 cm
2.02 oz / 2 x 2.6 in
26627



SPIRITS
SMOKE

60 ml / 5.1 x 6.7 cm
2.02 oz / 2 x 2.6 in
26627

Capacity (ml) / width (upper rim) x height (cm). Whisky Set is available in clear crystal and all basic colours, with a gold or platinum decoration. Whisky Set is available in a smooth design, with a pebble cut or with various engraved motifs. Customisable with a coat of arms or initials.



HERITAGE

DRINKING SETS

JUST LIKE FAMILY SILVERWARE
IS PASSED ON FROM GENERATION
TO GENERATION, MOSER TEND
THE MASTERFUL CRAFTSMANSHIP
OF ITS GLASSMAKERS.

This results in continuity: collections that are produced
unchanged for decades. Though the world
around us constantly changes, the handicraft of
unmatched quality remains a valuable heritage
for all lovers of crystal.

MARIA THERESA

DESIGN: 1913

ART WITHOUT EQUAL

This legendary drinking collection was inspired by a baroque table set used in the Schönbrunn Palace in Vienna during the reign of Austrian Empress and Czech Queen Maria Theresa.

Using lead-free crystal and the masterful skills of Karlsbad glassblowers, cutters and engravers, Leo Moser elevated the design to a true work of art.



BOWL
MARIA THERESA

42 x 25.3 cm
16.5 x 9.9 in
801



BOWL
WATTEAU

42 x 25.3 cm
16.5 x 9.9 in
801

DUE TO THE DIFFICULTY
OF ITS PRODUCTION,
THE MARIA THERESA SET
IS AMONG THE MOST
LUXURIOUS SHOWCASES OF
MOSER CRAFTSMANSHIP.

The set is decorated with two different types of engraved art. The original rococo décor from 1913 is composed of ornaments of fine acanthine leafwork and flower baskets. In the 1930s, engraver Konstantin Hable Sr. expanded the set with a version featuring gallant figural motifs based on rococo paintings by J. A. Watteau. Another prime example of how the glassmaking craft is passed on from generation to generation is the further expansion of the set by the addition of the Belvedere bowl with yet another difficult engraving, which was designed by Konstantin Hable Jr. another twenty years later.

Width (upper rim) x height (cm). The Maria Theresa set is available in clear crystal, in a cut version or with Maria Theresa and Watteau engraved motifs.

**WATER**

1500 ml / 10.5 x 20.9 cm
1.5 qt. / 4.1 x 8.2 in
10639

**WINE**

1000 ml / 12.3 x 31 cm
1 qt. / 4.8 x 12.2 in
10630/I

**WHITE WINE**

210 ml / 7.8 x 15.6 cm
7.1 oz / 3.1 x 6.1 in
10622

**RED WINE**

290 ml / 8.7 x 17.5 cm
9.8 oz / 3.4 x 6.9 in
10621

**CHAMPAGNE**

140 ml / 4.5 x 20.3 cm
4.73 oz / 1.8 x 8 in
10631/x/f

**WATER**

320 ml / 7 x 12.1 cm
10.82 oz / 2.8 x 4.8 in
10638/I

**SPIRITS**

35 ml / 3.9 x 5.8 cm
1.18 oz / 1.5 x 2.3 in
10638/V

**WHISKY**

380 ml / 8.8 x 9.5 cm
12.84 oz / 3.5 x 3.7 in
10628/O

Capacity (ml) / width x height (cm). The decanter height is specified without a stopper. The width measurements refer to the bottom of decanters and jugs and to the top edge of all other shapes. The Maria Theresa set is available in clear crystal, in a cut version or with Maria Theresa and Watteau engraved motifs. Customisable with a coat of arms or initials.

THOMAS

DESIGN: 1929 / LEO MOSER

FUNCTIONALISM FOREVER

Leo Moser's production clearly demonstrates how flexibly he was able to respond to new trends. The simple facet cut of the glasses, decanter and jug indicates a clear preference for functionality over form. Despite the absence of gilded and ornamental decorations or complex cut, the Thomas collection does not look plain and leaves an impression of confidence and timelessness instead. This is further evidenced by the fact that the list of owners of this set includes personalities such as the Rampur maharajah.



WINE

1000 ml / 13 x 33.9 cm
1 qt. / 5.1 x 13.3 in
14010/I



WATER

1500 ml / 13 x 19.9 cm
1.5 qt. / 5.1 x 7.8 in
14019

Leo Moser, who became the Art and Technical Director of the glassworks in 1916, spent the late 1920s and early 1930s intensely focused on developing coloured glass.

Moser's secret recipes from that period remain one of the pillars of the brand to this day. Thomas was one of the first drinking collections where colours played a major role.

Capacity (ml) / width x height (cm). The decanter height is specified without a stopper. The width measurements refer to the bottom of decanters and jugs. The Thomas set is available in clear crystal and all basic colours. Customisable with a coat of arms or initials.





WHITE WINE

230 ml / 10.4 x 18.6 cm
7.77 oz / 4.1 x 7.3 in
14001/1/2



RED WINE

270 ml / 11.3 x 19.7 cm
9.12 oz / 4.4 x 7.8 in
14001



LIQUEUR

50 ml / 6.8 x 12 cm
1.69 oz / 2.7 x 4.7 in
14005



WATER

290 ml / 10.2 x 14 cm
9.8 oz / 4 x 5.5 in
14018/l



SPIRITS

60 ml / 6 x 8.7 cm
2.02 oz / 2.4 x 3.4 in
14018/V



WHISKY

200 ml / 8.9 x 11.1 cm
6.76 oz / 3.5 x 4.4 in
14008



CENTREPIECE

23 x 15.4 cm
9.1 x 6.1 in
14000/N



SMALL BOWL

13.5 x 5.8 cm
5.3 x 2.3 in
14012



CHAMPAGNE
CLEAR CRYSTAL

150 ml / 8 x 21.9 cm
5.07 oz / 3.1 x 8.6 in
14011/x/f



CHAMPAGNE
ELDOR

150 ml / 8 x 21.9 cm
5.07 oz / 3.1 x 8.6 in
14011/x/f



CHAMPAGNE
TOPAZ

150 ml / 8 x 21.9 cm
5.07 oz / 3.1 x 8.6 in
14011/x/f



CHAMPAGNE
ROSA LIN

150 ml / 8 x 21.9 cm
5.07 oz / 3.1 x 8.6 in
14011/x/f



CHAMPAGNE
BERYL

150 ml / 8 x 21.9 cm
5.07 oz / 3.1 x 8.6 in
14011/x/f



CHAMPAGNE
ALEXANDRITE

150 ml / 8 x 21.9 cm
5.07 oz / 3.1 x 8.6 in
14011/x/f



CHAMPAGNE
AQUAMARINE

150 ml / 8 x 21.9 cm
5.07 oz / 3.1 x 8.6 in
14011/x/f

Capacity (ml) / width (upper rim) x height (cm). The Thomas set is available in clear crystal and all basic colours. Customisable with a coat of arms or initials.

PARIS

DESIGN: 1925 / RUDOLF WELS



ARTISTICALLY CUT JEWELS

The design of the collection bears the signs of the strong architectonic inclination of its author, Rudolf Wels. Each element is composed of several geometrical shapes that must be cut with absolute precision to flow perfectly from one to another.

Any deviation from symmetry is instantly revealed. On the larger glasses, attention is immediately drawn to the pair of large crystal brilliants that separate the stem from the foot and the chalice.

RUDOLF WELS

During his studies in Vienna, Wels also collaborated with Adolf Loos. In the 1920s and 30s, his designs served as the foundation for a number of spa buildings in Karlsbad. He also drafted the project for the renovation of the Moser glassworks in 1921. He designed decorative objects, vases of black hyalite with etched gilded décors and with Animor oroplastic décors, and occasionally even worked on drinking glassware.



**WINE**

720 ml / 11.8 x 31.8 cm
24.34 oz / 4.6 x 12.5 in
13170/PO/II

**WINE**

270 ml / 10.2 x 22.5 cm
9.12 oz / 4 x 8.9 in
13161/PO

**CHAMPAGNE**

150 ml / 11.1 x 12.7 cm
5.07 oz / 4.4 x 5 in
13169/PO

**LIQUEUR**

85 ml / 7.3 x 15 cm
2.87 oz / 2.9 x 5.9 in
13164/PO

**WATER**

280 ml / 9.6 x 16 cm
9.46 oz / 3.8 x 6.3 in
13168/PO/I

**WATER**

180 ml / 8.6 x 14.2 cm
6.08 oz / 3.4 x 5.6 in
13168/PO/II

Capacity (ml) / width x height (cm). The decanter height is specified without a stopper. The width measurements refer to the bottom of decanters and to the top edge of all other shapes. PO = thin gilded rim. The Paris set is only available in clear crystal.

BAROQUE

DESIGN: 1913 / ARNOLD ZADIKOW



CRYSTAL CLEAR BAROQUE

The Baroque drinking collection based on the designs of Arnold Zadikow from 1936 is among the most technically demanding collections in the Moser repertoire. The shape of the glasses and their rich engraved décor in particular build on patterns typical for the 18th century.

The collection is characterised by its engraved décor of dense acanthine leafwork that covers the entire shell of the chalices and reappear on the foot as well. The very architecture of the glasses, decanter or jug is similarly captivating. Zadikow also designed several vases and bowls with the same type of engraved ornament.

Cat. no. 18510/I, width (bottom edge) x height: 11.4 x 24.7 cm / 4.5 x 9.7 in. The decanter height is specified without a stopper. The Baroque set is only available in clear crystal, with an engraved motif.



**WHITE WINE**

150 ml / 7.6 x 12.8 cm
5.07 oz / 3 x 5 in
18502

**RED WINE**

210 ml / 8.3 x 14.2 cm
7.1 oz / 3.3 x 5.6 in
18501

**CHAMPAGNE**

120 ml / 5.4 x 16.2 cm
4.06 oz / 2.1 x 6.4 in
18511/f

**LIQUEUR**

70 ml / 5.9 x 10 cm
2.37 oz / 2.3 x 4 in
18504

**WATER**

290 ml / 7.3 x 12.4 cm
9.81 oz / 2.9 x 4.9 in
18518/II

**WATER**

1500 ml / 12.3 x 22.6 cm
1.5 qt. / 4.8 x 8.9 in
18519

**WHISKY**

370 ml / 9.4 x 9.5 cm
12.51 oz / 3.7 x 3.7
18508/O

**SMALL BOWL**

11.5 x 6.5 cm
4.5 x 2.6 in
18512

GIANT SNIFTERS

DESIGN: 1957 / FRANTIŠEK CHOCHOLATÝ & RUDOLF SCHWEDLER

A SUCCESS OF GIANT PROPORTIONS

This unique hexad of glasses, the shape and size of which correspond to six different human physiognomies, was created in 1957 on the occasion of the 100th anniversary of the Moser glassworks. The then manager of the glassworks' Prague shop, František Chocholatý, together with his colleague Rudolf Schwedler also took the opportunity to found the Giant Snifters Club, which allows any friend of Moser luxury crystal to become a member.

The set was introduced at film festivals in Karlsbad, Monte Carlo and Sorrento. A year later, it received the Grand Prix award at

EXPO 58 in Brussels as part of a broader presentation of the brand. Slim Lady, Long Fellow, Long Face, Moon Face, Stout Gentleman and Big Bertha are welcome guests in any society and know how to get things flowing.

Each glass is unique by its shape, size and the clink it makes. The glasses are also perfectly balanced, allowing them to dance on the foot. Pick the glass you find the most personable, spin it up on the edge of the foot and pour the aperitif or digestif until the glass comes to a stop. It's not as easy as it may seem...





GIANT SNIFTER
SLIM LADY
CLEAR CRYSTAL

440 ml / 7 x 46 cm
14.87 oz / 2.8 x 18.1 in
26020



GIANT SNIFTER
LONG FELLOW
CLEAR CRYSTAL

1000 ml / 9.5 x 42.8 cm
1 qt. / 3.7 x 16.9 in
26021



GIANT SNIFTER
LONG FACE
CLEAR CRYSTAL

1850 ml / 9.3 x 39.3 cm
1.96 qt. / 3.7 x 15.5 in
26022



GIANT SNIFTER
MOON FACE
ELDOR

2700 ml / 14.2 x 32.5 cm
2.85 qt. / 5.6 x 12.8 in
26023



GIANT SNIFTER
STOUT GENTLEMAN
ROSALIN

3200 ml / 12.4 x 27.1 cm
3.38 qt. / 4.9 x 10.7 in
26024



GIANT SNIFTER
BIG BERTHA
BERYL

4700 ml / 20.4 x 23.6 cm
4.97 qt. / 8 x 9.3 in
26025

The Giant Snifters set is available in clear crystal and Moser colours, with each shape having an assigned colour of its own. Available in three sizes - from truly giant snifters to a gift series of miniatures. The largest series can also be used for decorative purposes for remarkable floral arrangements. Capacity (ml) / width (upper rim) x height (cm). Customisable with a coat of arms or initials.